



925 South Sixth Street  
De Pere, WI 54115

## **Project Overview**

The development of a state-of-the-art dog park in the City of De Pere is currently underway.

### *Why a dog park?*

More than 1 in 3 households in the United States own at least one dog. Dogs are our companions, friends, and cherished members of our families. A dog doesn't care if we are wealthy or poor, young or old, or how well we perform at work or school. They love us for exactly who we are, each and every day. It is an unfortunate irony that as the urban population of dogs has increased, the availability of places where we can legally bring them to exercise, socialize, and just be dogs has drastically decreased.

***"Exercise, discipline, and affection – in that order!"***

-“Dog Whisperer” Cesar Milan’s formula for a happy, well-balanced dog

***"Dog parks make dogs tired, and a tired dog is a happy, good dog."***

-Gina Spadafori, author and respected pet expert

Animal behaviorists believe that well-exercised and socialized dogs are better family companions and are safer for the community as a whole. The ramifications of being “unbalanced” are dire for our canine friends. Studies have shown that behavior problems are a primary or secondary factor in the majority of animal shelter dog surrenders.

In an effort to address these issues, the creation of dog parks has exploded throughout the U.S. Wisconsin alone has over 40, with the Madison and Milwaukee regions currently operating 20 between them. Even Outagamie County has two parks with a total of 30 fenced acres. Unfortunately, the greater Green Bay area has not been as progressive – until now!

The City of De Pere and the De Pere Dog Park Association have worked diligently to secure an ideal location and have created a plan to develop it into a top-notch dog park. This plan has received outstanding support from the City and the community. All matters related to the dog park brought before the Park Board and City Council have received unanimous approval, with no public objections from any citizen or business. In addition, the Park and Rec department has committed to continuing developmental support and maintenance of the park once it has opened.

This 19-acre parcel of undevelopable property in the West De Pere Business Park has all the natural features required for a first-class facility – woods, a pond, and plenty of open space. The base work has already been done – open areas have been graded, the parking area has been created, and the wood trails have been cut. Now we need to raise the funds to continue on our path of turning this beautiful plot of land into a premier pet exercise area.

Although this park is owned and supported by the City of De Pere, it is our vision that it be equally accessible to any member of any community.



925 South Sixth Street  
De Pere, WI 54115

## PROJECT BUDGET/PLAN

### ***Phase 1 – Open the Park***

***\$45,000***

- Fencing – wood run & small dog run
- Portable restroom
- Doggie bag/waste stations
- Base signage
- Donation box
- Benches

### ***Additional Projects***

***\$250,000***

- Drinking fountain
- Fencing - pond run
- Benches - pond run
- Dock(s)
- Security lighting – parking lot and wood run
- Open shelter w/concrete base & picnic tables
- Memorial wall
- Pond fountains/circulation
- Pave parking lot
- Security lighting – pond run
- Permanent restroom facilities



925 South Sixth Street  
De Pere, WI 54115

### **Main Sponsor contribution recognition**

*Identified on main sponsor sign near park entrance*

**Best in Show:** Contributions of **\$30,000** or greater  
**Best in Group:** Contributions of **\$5,000-\$29,999**  
**Best of Breed:** Contributions of **\$1,000-\$4,999**

### **Other Contribution recognition**

**Pack Members** Contributions of **\$100-\$999**  
*Recognition on website*

**In-kind contributions** All will be recognized appropriately  
Degree and type of recognition dependant upon value/effort

*Anonymity upon request*

### **Special recognition opportunities – while available**

*In addition to previously noted recognition*

### **Park Naming Rights**

Available upon discussion/per proposal only

### **Park Area Naming Rights**

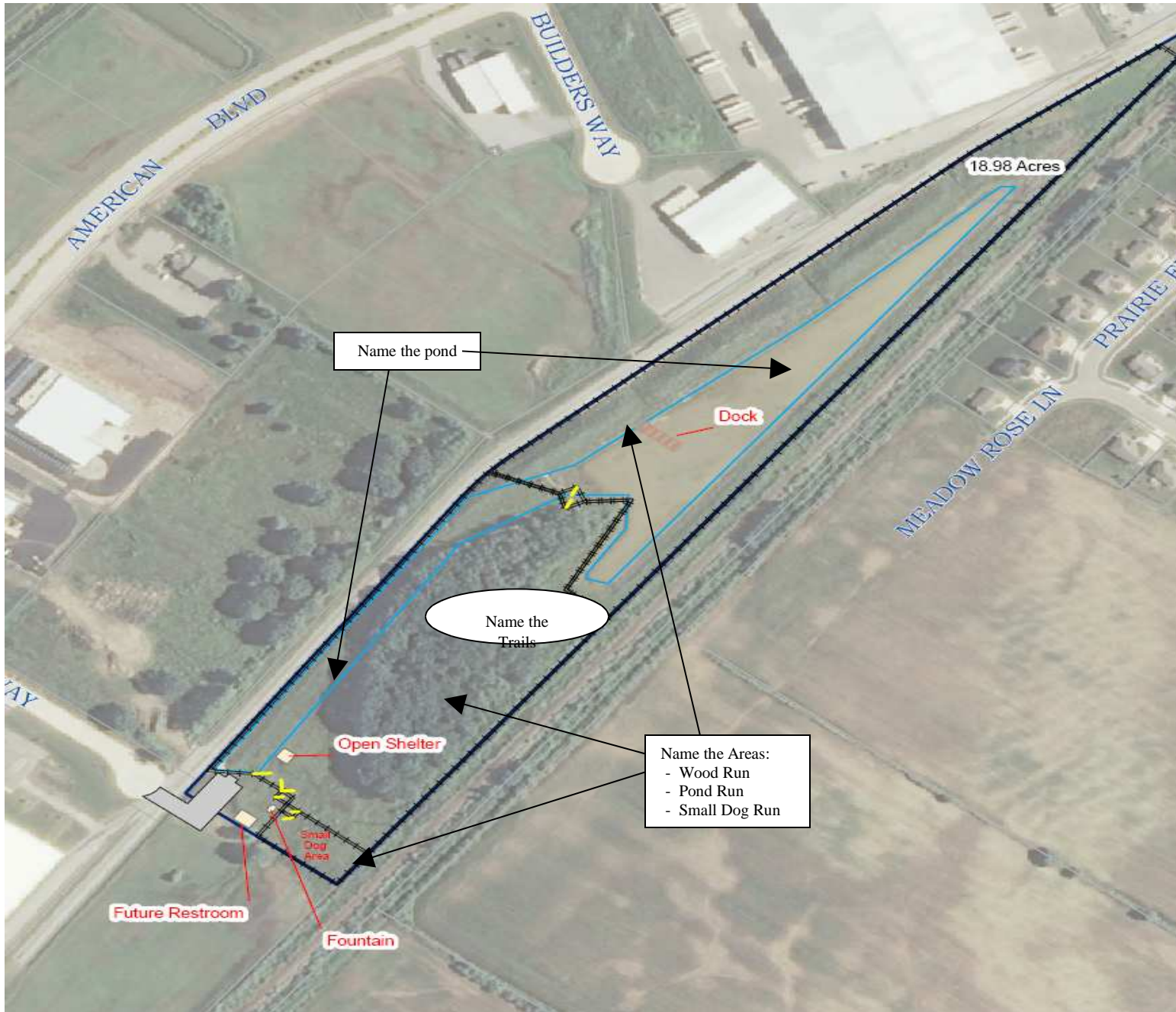
Contributions of **\$30,000** or greater

- Wood Run Area
- Pond Run Area
- Small dog Run Area
- Pond

### **Feature Sponsorship/Naming Rights**

- Open Shelter – Contribution of **\$20,000** or greater
- Dock(s) – Contribution of **\$15,000** or greater
- Wood Area Trails – Contributions of **\$5,000** or greater
- Water Fountain – Contribution of **\$5,000** or greater
- Benches – Contribution of **\$2,500** or greater

*All donations to the De Pere dog park are held in an isolated account by the City of De Pere to be used only for development of the park, and they are tax deductible to the extent of the tax law.*



Park Area Naming Rights and Feature  
Sponsorship  
De Pere Dog Park